

# Paw Prints Monthly

## OUR MISSION STATEMENT:

Liberty Veterinary Hospital strives to create a state-of-the-art pet care facility that meets all of our clients' & pets' needs from nutritional supplies, boarding and grooming to the highest level of medical and surgical care. Because our team can only be as good as the sum of its parts, we nurture and educate our staff so that we may all provide uncom-

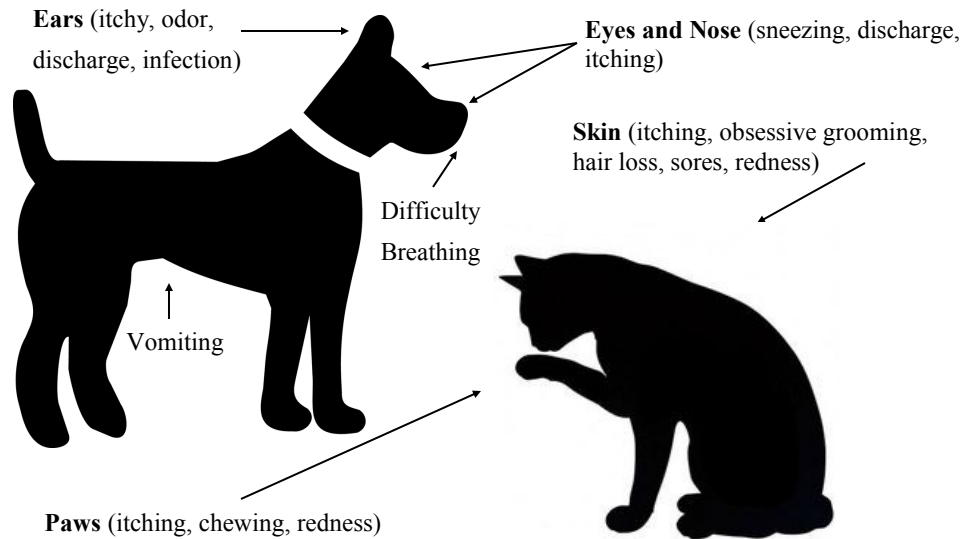
# AUGUST IS ALLERGY AWARENESS MONTH

### Did You Know ...

- We offer dog obedience class
- We offer boarding and laser surgery
- We offer massage and rehabilitation therapy recommendations
- We offer *free* educational seminars
- We really look forward to visiting with you and your pet!

Pet allergies have you *scratching* your head?  
Let us offer you some relief....we're *itching* to help!

## Signs and Symptoms of Allergies



### OUR HOURS:

- Mon, Tues, Thurs, Fri. 7:30am - 7pm
- Wed 7:30am - 6pm
- Sat 8:00am - 2pm
- Sun Closed



Why pets need vets

According to [Nationwide Pet Insurance](#), **skin allergies were the #1 reason policy holders took their dogs to the veterinarian in 2017.**

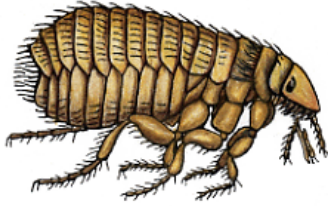
We've highlighted some of the common allergy triggers and possible treatments on the back of this newsletter. Together we can identify the triggers by beginning with an examination and diagnostic testing. We can then work to find the best possible treatment or treatments to have your itchy, uncomfortable pet feeling better again soon!

Amy Johnstone, DVM

Robyn Collins, DVM

# Common Allergies

## Fleas



Flea bites are the most common allergy with pets. Pets are allergic to the proteins that fleas secrete in saliva when they bite.

### **Treatment / prevention**

Flea control is essential. Start with an exam and then use a vet recommended flea preventative that kills adults and disrupts the lifecycle of the parasite on monthly basis.

We carry a variety of prescription parasite preventives. Talk to us about which one is best for your pet.

## Food



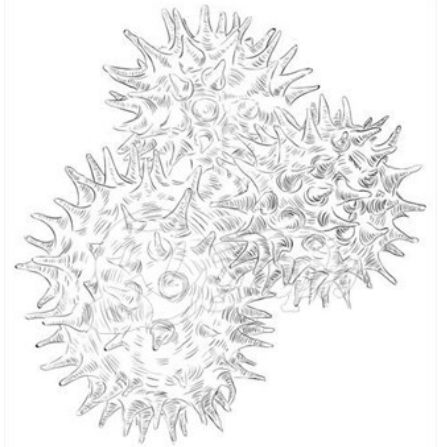
Food allergies occur when the immune system develops an allergic response to diet, often animal protein. This can cause itching and sometimes even vomiting and diarrhea.

### **Treatment / prevention**

Start with a vet recommended food for a food trial in which we have your pet eat only one specific diet for a predetermined time.

We carry a variety of Royal Canin diets and can find one that works for your pet.

## Environment



Pollens, mold, mildew, dust mites, dander, etc.—get inhaled or come in contact with skin.

### **Treatment / prevention**

Washing and vacuuming your pets bedding frequently, including rugs, curtains and other materials that gather dust.

Bathing may help relieve itching and remove environmental allergens and pollens from your dog's skin. Talk to us about what prescription shampoos are best, as frequent bathing with the wrong product can dry out skin.

Injections, oral and topical medications and supplements may also bring relief.